

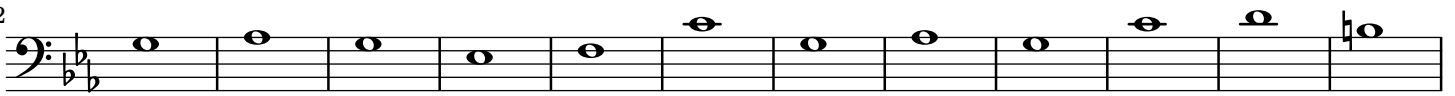
Generate cantus firmus: CF1-1226 (2019-06-09 02:38)

# 1, Cantus: lower part, Key: C minor

Part 1



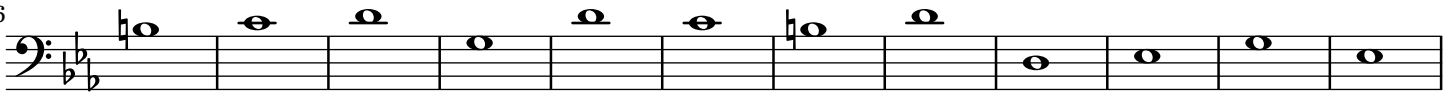
12



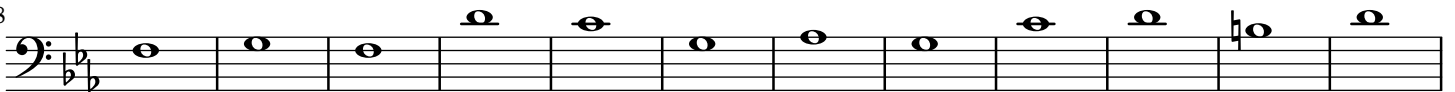
24



36



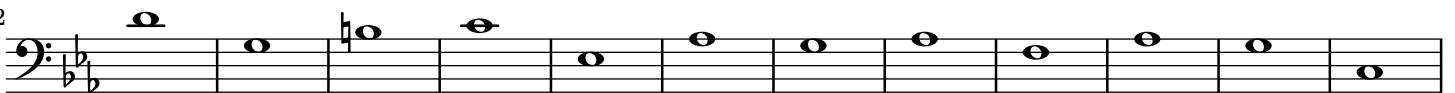
48



60



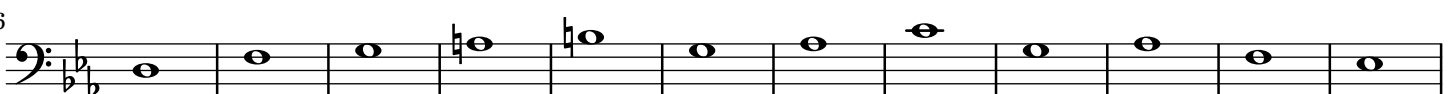
72



84



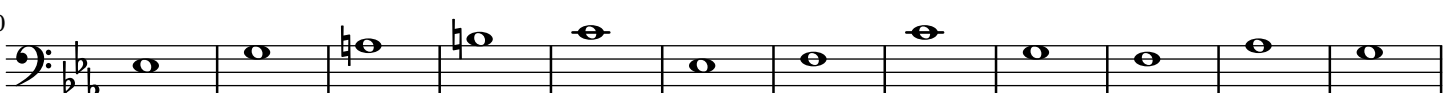
96



108



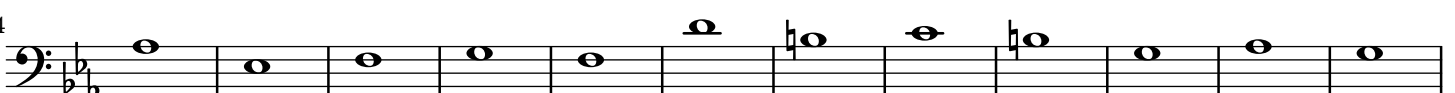
120



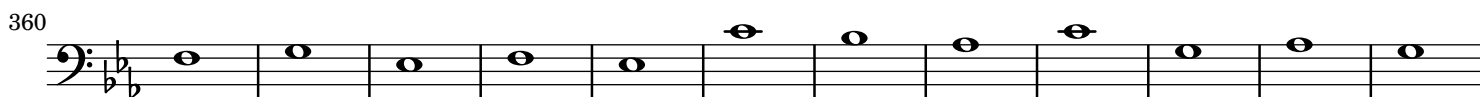
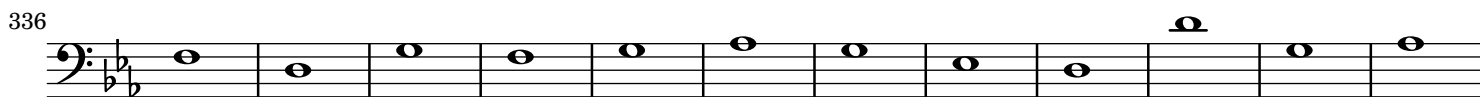
132



144







491 4

Musical notation showing a bass clef staff with 11 measures. The notes are: G2 (circled), A2 (underlined), B2 (underlined), C3, D3, E3, F3, G3 (circled), A3 (underlined), B3 (underlined), C4. The staff has a key signature of two flats and a 4/4 time signature.

✓ Excellent

**Legend:**

- 7 This note violates minor rule (green). If underlined, means that violation is shown in the score with shape of same color
- 8 This note violates major rule (red). If underlined, means that violation is shown in the score with shape of same color
- ⊙ Circled note is considered non-chord tone (passing, auxiliary or other) or a chord tone in a similar melodic form